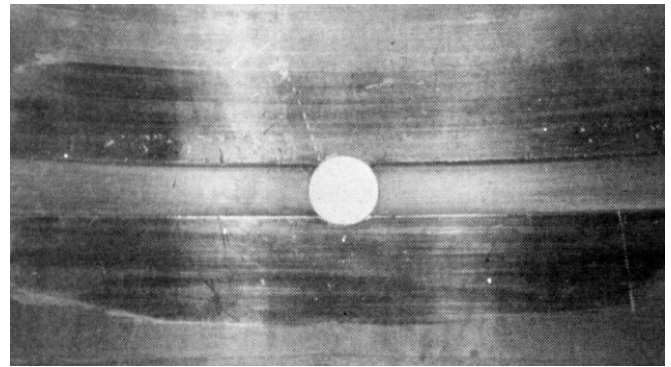
**Foreign matter****Characteristics**

Fine score marks or scratches in direction of motion, often with embedded particles and haloes.

Causes

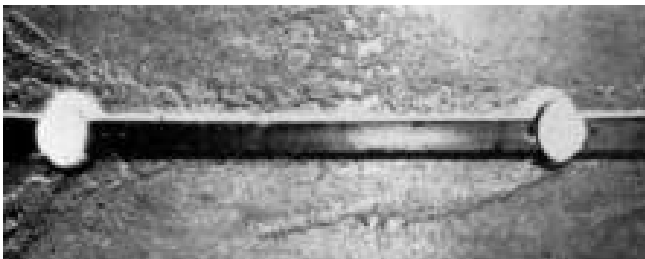
Dirt particles in lubricant exceeding the minimum oil film thickness.

**Wiping****Characteristics**

Surface melting and flow of bearing material, especially when of low-melting point, e.g. white metals, overlays.

Causes

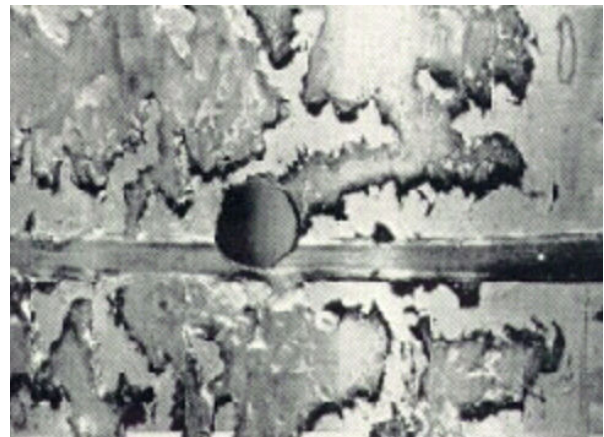
Inadequate clearance, overheating, insufficient oil supply, excessive load, or operation with a non-cylindrical journal

**Foreign matter****Characteristics**

Severe scoring and erosion of bearing surface in the line of motion, or along lines of local oil flow

Causes

Contamination of lubricant by excessive amounts of dirt particularly non-metallic particles which can roll between the surfaces.

**Fatigue****Characteristics**

Cracking, often in mosaic pattern, and loss of areas of lining.

Causes

Excessive dynamic loading or overheating causing reduction of fatigue strength; overspeeding causing imposition of excessive centrifugal loading.